



Smoke alarm safety

Which is the loudest?

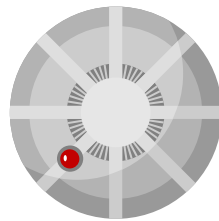
We hear lots of sounds every day, if you close your eyes now what can you hear? Have a go at our sound challenge. We've put a list of sounds below, can you put them in order starting with the quietest and ending with the loudest?



A cats meow



A vacuum cleaner



A smoke alarm



Rustling leaves on a tree



A car horn

1

2

3

4

5

QUIETEST



LOUDEST



HOW DO WE MEASURE SOUND?

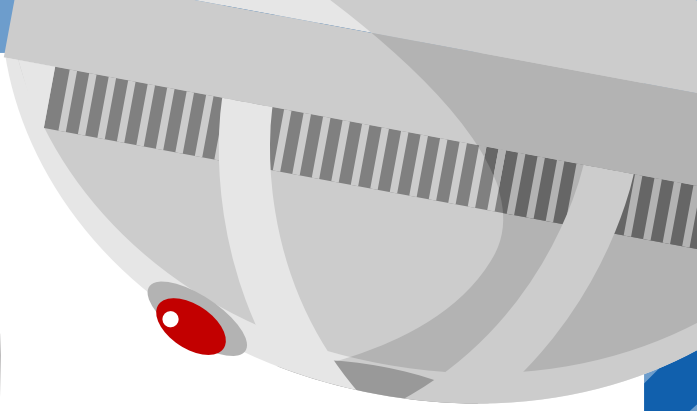


Special machines called sound meters measure how loud a sound is. Sounds are measured in something called decibels, this can be written like dB.

A whisper is about 30dB and the sound of normal conversation is about 60dB.

A smoke alarm is 85dB, that's pretty loud!

Push the button



It's really important that you test your smoke alarm every week so you know it's still working.

Remember to push the button to hear it bleep!

Can you find the sound based words in the word search to the right?

- | | |
|-----------------|----------------|
| Bleep | Scream |
| Bang | Screech |
| Buzz | Shout |
| Clatter | Sing |
| Decibels | Splash |
| Hoot | Toot |
| Noise | Whisper |
| Purr | Whistle |
| Roar | Volume |
| Rustle | |



SMOKE ALARM FACTS

- You should replace your smoke alarm every 10 years.
- If you hear your smoke alarm bleeping once every so often it might need new batteries. Ask your grown-ups to check.

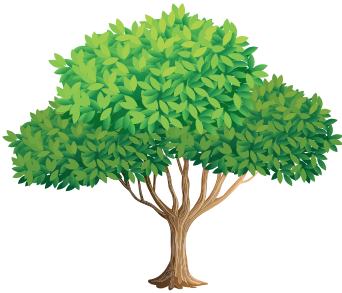


Answer sheet

Which is the loudest?

NO PEEKING

Special machines called sound meters measure how loud a sound is. Sounds are measured in something called decibels, this can be written like dB.



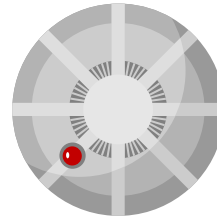
Rustling leaves on a tree = 20dB



A cats meow = 40dB



A vacuum cleaner = 75dB



A smoke alarm = 85dB



A car horn = 100 - 110dB

1

2

3

4

5

Push the button

V	B	U	Z	Z	R	S	I	N	G	R	A	O	R
H	O	O	T	O	N	W	R	B	Z	T	R	H	S
E	T	O	O	T	O	P	H	A	I	E	S	A	I
C	V	E	H	N	I	S	R	I	B	A	P	W	L
S	W	O	H	S	S	S	U	W	S	A	C	E	C
O	H	V	L	O	E	U	S	E	E	T	N	L	L
I	I	R	C	U	A	B	T	S	E	Z	L	G	A
B	S	R	L	E	M	L	L	T	T	S	P	E	T
E	P	U	E	L	A	E	E	A	U	P	U	H	T
B	E	P	S	R	S	E	A	T	O	L	I	E	E
I	R	C	M	T	P	P	T	O	H	A	I	S	R
E	R	H	C	E	E	R	C	S	S	S	E	G	O
I	O	S	L	E	B	I	C	E	D	H	R	O	B
R	Z	U	M	A	E	R	C	S	S	H	P	S	H

